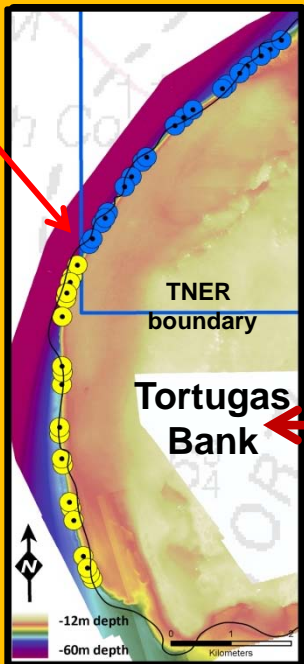
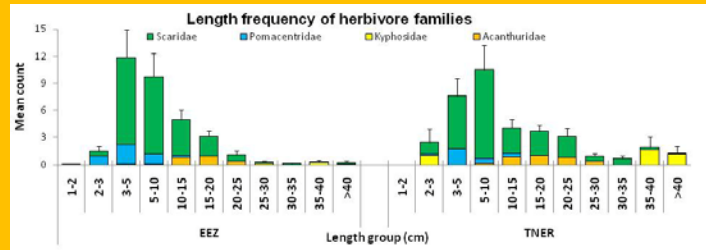
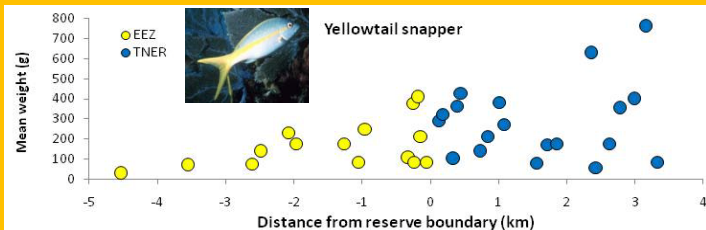
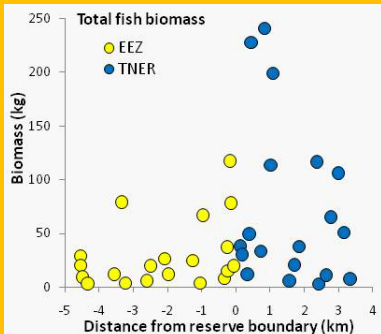


Impact of the Tortugas North Ecological Reserve on the Fish Community

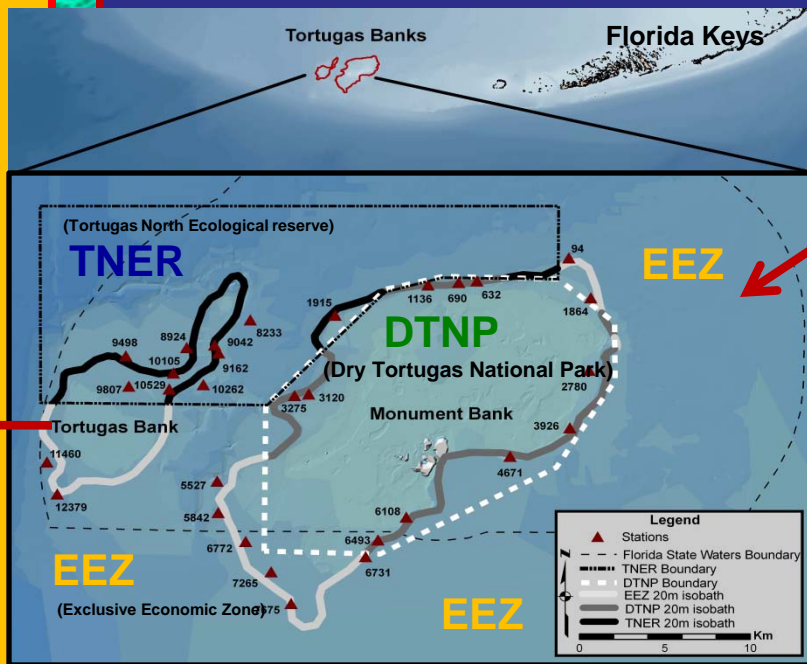
John S. Burke, Shay Viehman, Greg Piniak, Christopher Taylor, Mark Fonseca, Center for Coastal Fisheries and Habitat Research at Beaufort, NOAA/NOS/NCCOS, Beaufort, NC 28516

TNER Boundary Experiment

Methods: In 2008 reef fish communities and benthic habitat of similar reef scapes were compared within and outside the Ecological Reserve. 40 stations were randomly selected from a section of the 30 m depth contour of the Western margin of the Tortugas Bank. The fish community was surveyed visually along band transects and benthic habitat coverage was assessed from photo-quadrates.

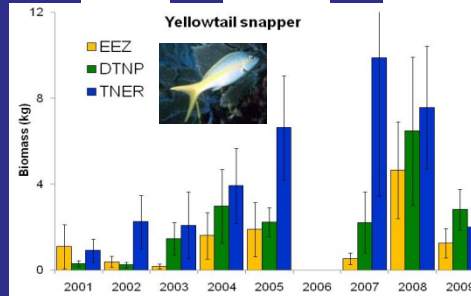
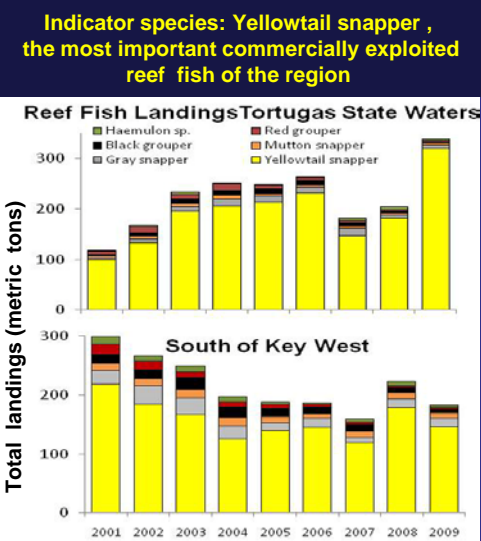
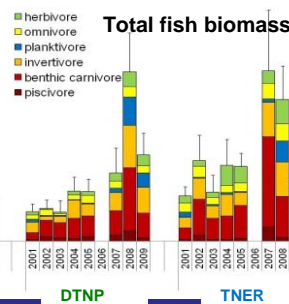


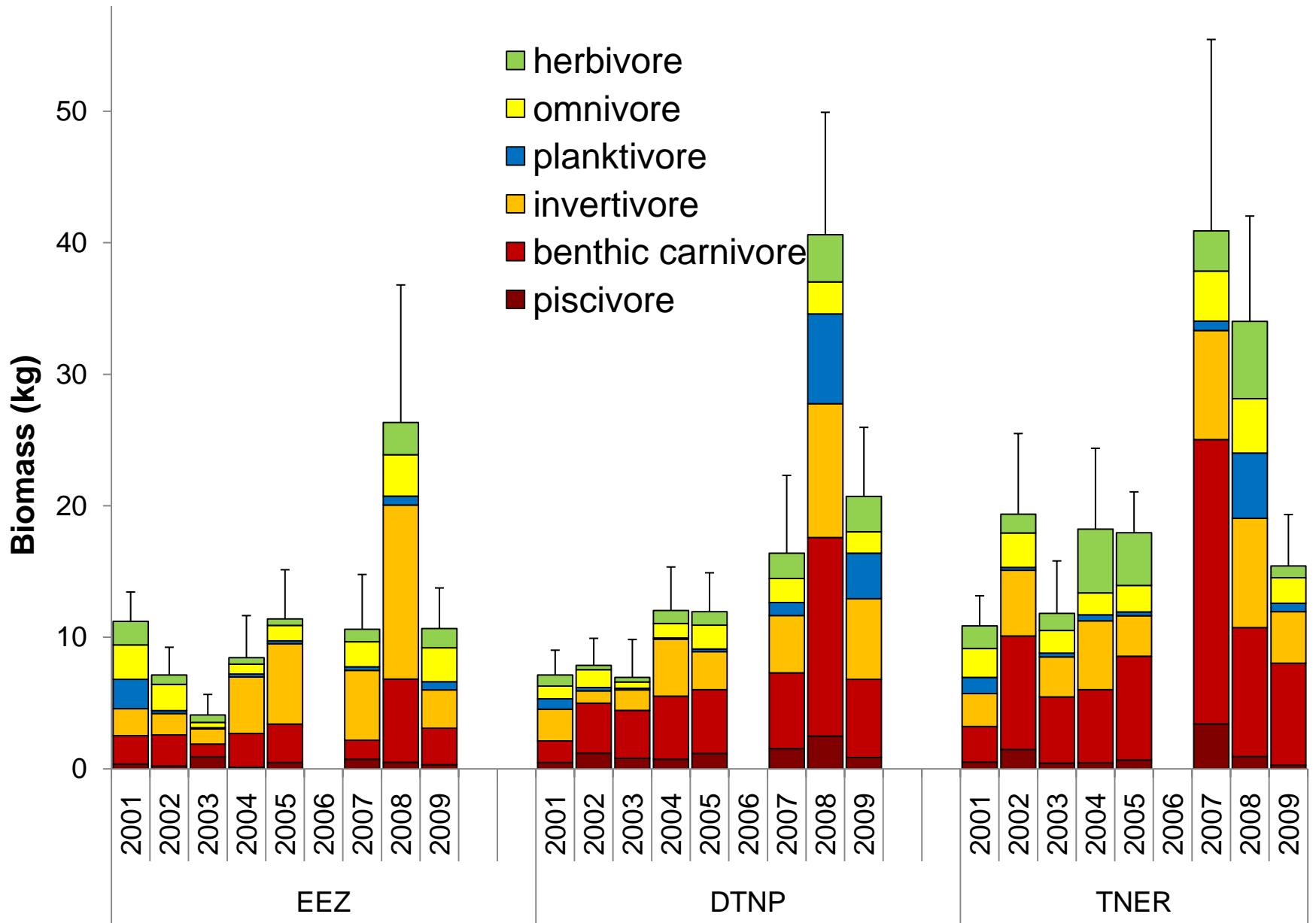
Monitoring of Tortugas Management Zones



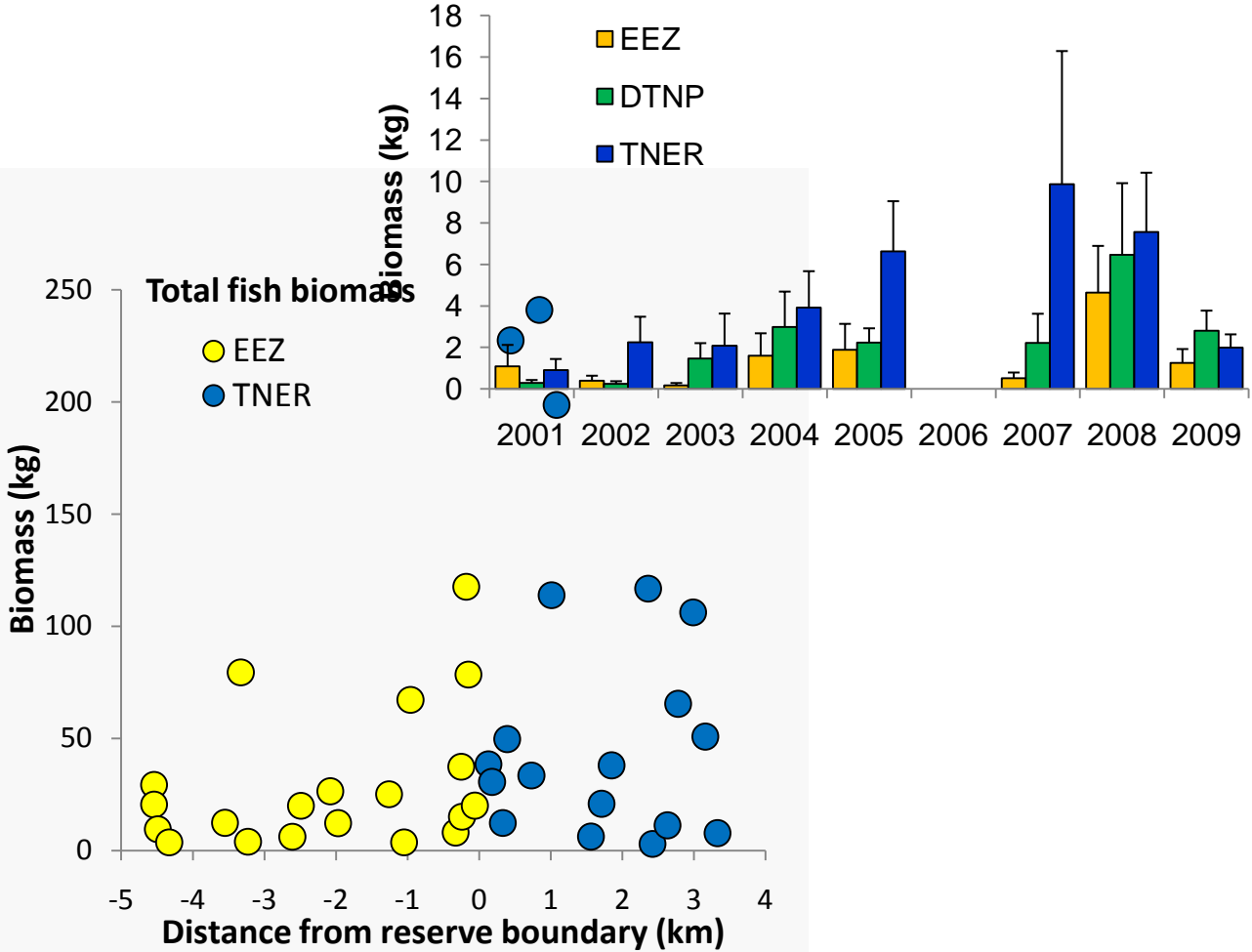
Methods: In 2001-2009 three areas differing in fisheries management; Tortugas North Ecological Reserve (TNER, no-take zone), Exclusive Economic Zone (EEZ, commercial and recreational fishing permitted), Dry Tortugas National Park (DTNP, recreational fishing only), were surveyed. Thirty fixed stations, randomly selected in 2001, were revisited annually* and reef fish (visual transects) and benthic habitat (photo-quadrates) sampled. All stations were located at the interface of reef and soft bottom shelf.

* No sampling in 2006.





Yellowtail snapper



Yellowtail snapper

